



**susteed**<sup>®</sup>

**Success**  
*is rooted  
in details.*

Treat seeds with Susteed to control early diseases and stimulate root growth.



# Modern vegetable production **needs Susteed.**

Vegetable production is facing increasing disease and pest pressure, and a shrinking range of solutions to deal with this pressure and secure healthy plant growth. In this context, giving crops the right start has become more important than ever. Sustainable seed treatments play a crucial role in protecting young plants and ensuring robust, uniform emergence – regardless of region or growing conditions.

In this environment, we have launched Susteed: a biological seed treatment designed to give vegetable crops a strong and reliable start.

Susteed offers protection against soil-borne diseases – but that is not all. It also supports root development, nutrient uptake, and plant vitality during the critical early growth stage.

In a world where societal ambitions for sustainability are growing and regulatory restrictions are tightening, growers are looking for modern, future-proof solutions. Susteed is exactly this, adding new possibilities to their toolbox and increasing their seeds' value.

**Susteed is available now in a wide range of vegetable crops.**

## Susteed: Key facts

Active ingredient	<i>Bacillus amyloliquefaciens</i> strain QST713
Classification	Biological FRAC Group BM02
Function	Biological seed treatment with fungicidal and plant-strengthening activity
Formulation	FS (flowable suspension), specifically for seed treatments
Diseases controlled	<i>Ascomycetes</i> and <i>basidiomycetes</i> , inc. <i>Phoma</i> and <i>Rhizoctonia</i>
Additional benefits	Plant defense stimulation, improved root development, increased abiotic stress tolerance
Selected crops	Many vegetables inc. tomato, onion, leek, spinach, lettuce; oilseed rape

# A tiny organism **that makes a big difference.**

## Susteed's key ingredient

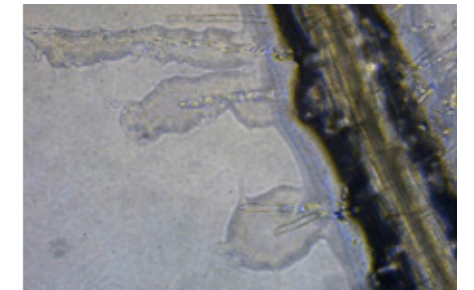
The active ingredient in Susteed is *Bacillus amyloliquefaciens* strain QST713, in a highly concentrated and stable formulation with high spore density to ensure consistent performance.

Although Susteed is a new seed treatment product, the QST713 strain is already well established, and has been used for many years in our foliar biological fungicide Serenade. With Susteed, this technology has been optimized for use as a seed treatment, delivering benefits from the germination stage onward.

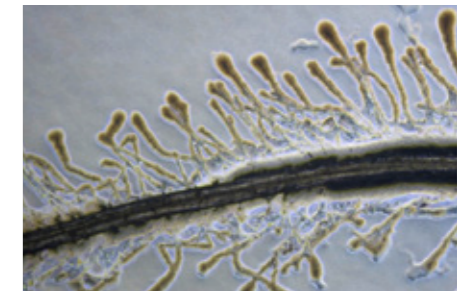
## How Susteed works

Susteed is applied to the seed before sowing. After sowing, *Bacillus amyloliquefaciens* strain QST713 becomes active in the root zone.

The bacterium feeds on root exudates, and rapidly colonizes the root system, developing a dense biofilm around it. A stable microbial zone then develops around the roots, growing as they do. This forms the basis for Susteed's protective and plant-strengthening effects.






Colonization of root



Colonization of root hairs

## What growers get from Susteed

Susteed's benefits include:

-  **Disease control:** Susteed's highly concentrated formulation has a high density of spores, which suppress soil-borne diseases including *ascomycetes* and *basidiomycetes* that would present a high risk to the plant.
-  **Induced systemic resistance:** Susteed spores initiate a defense response in all plant cells. This primes the plant's defense against both biotic and abiotic stress.
-  **Plant stimulation:** Susteed promotes nutrient uptake and root growth, leading to better overall plant growth potential.

**Together, these benefits lay the early foundations for a strong and resilient crop throughout the growing cycle.**

# *A targeted way to support seed companies and growers*

At Bayer, our innovation is driven by an ambition to develop sustainable solutions that contribute to the agriculture of today and tomorrow. Solutions that reflect real-world practice, address global challenges, and create value right from the beginning of cultivation.

That is why we developed Susteed: because a strong start makes all the difference. It's a new way to give growers the confidence to invest in premium seeds.

**Treat seeds with Susteed and help them fulfill their potential.**



## **Would you like to know more about Susteed?**

**Please contact:**

**Jan Hulst**

Crop Advisor Protected Crops & Susteed

Email: [Jan.hulst@bayer.com](mailto:Jan.hulst@bayer.com)

Phone: +31 6 27830503



**Bayer CropScience SA-NV**  
Postbus 88  
2130 AB HOOFFDORP

The data and graphics presented reflect findings from tests and observations. They have been compiled to the best of our knowledge. However, the findings and results also depend on factors beyond the control of Bayer Crop Science, such as local climatic conditions, which may be subject to considerable fluctuations. Bayer Crop Science can therefore not guarantee the results and the advantages or disadvantages calculated and derived from individual cases.