



# MINUET™

## Minuet™ Biological Fungicide

*FRAC Group 44*

Minuet™ biological fungicide is a soil-applied biological. In the soil, it forms a symbiosis with the plant and triggers activation of root and plant growth as well as the plant's defense response to support healthy plants and increased crop quality and yield potential.

### /// BENEFITS

- Specifically designed for soil application
- Low use rate
- Supports early plant establishment and increases vigor in fruiting vegetables
- Helps increase the uniformity of potatoes, sugarbeets and carrots
- Suppression of key diseases such as Fusarium, Phytophthora, Pythium, Rhizoctonia and Verticillium
- Great addition to a full-season spray program in all key crops
- Supports crop quality improvements or yield potential in all key crops
- Resistance management tool

### /// PROVEN PERFORMANCE

- **Stress Reduction**  
Minuet™ stimulates the plant to help tolerate stressors like drought and heat.
- **Nutrient Availability**  
Minuet™ solubilizes key nutrients in the soil to enhance uptake, leading to healthy, high-quality produce with an increased shelf life.

### /// MINUET™ BIOLOGICAL FUNGICIDE QUICK FACTS

- **Active Ingredient:** Bacillus subtilis strain QST 713
- **Signal Word:** Caution
- **REI:** 4 hours
- **PHI:** 0 days
- **Use Rate:** 3-24 oz/A, depending on crop

### /// HOW MINUET™ BIOLOGICAL FUNGICIDE WORKS

When applied to the root zone, Minuet colonizes the roots and helps enhance root growth, increase nutrient uptake by solubilizing nutrients bound in the soil, protect the plant, and prime the plant against biotic and abiotic stress.

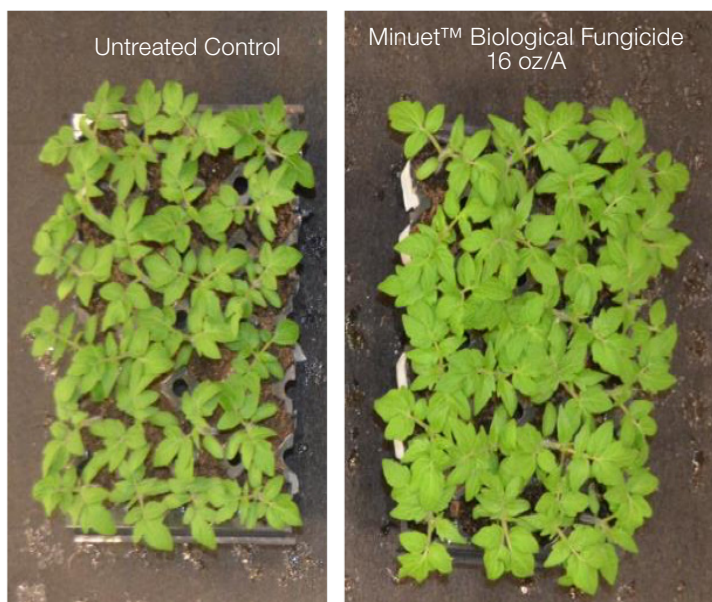
Key Crops	Disease Suppression
<ul style="list-style-type: none"><li>• Carrots</li><li>• Citrus</li><li>• Fruiting Vegetables</li><li>• Potatoes</li><li>• Rice</li><li>• + Many more!</li></ul>	<ul style="list-style-type: none"><li>• Fusarium</li><li>• Phytophthora</li><li>• Pythium</li><li>• Rhizoctonia</li><li>• Verticillium</li></ul>

## Helps Increase Carrot Uniformity



Greenhouse trials done at Bayer R&D facility in West Sacramento, CA, in 2019.

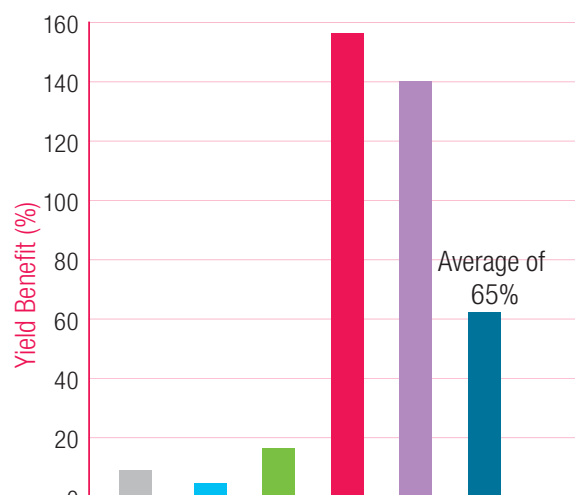
## Aids Early Plant Establishment In Tomatoes



The data shown is from Bayer controlled environment and small-plot research and growers could experience different results depending on the crop management program used.

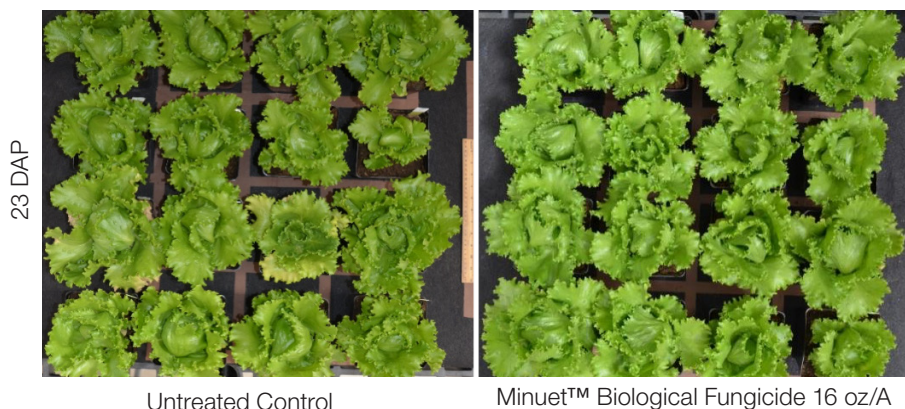
Greenhouse trials done at Bayer R&D facility in West Sacramento, CA, in 2020.

**Supports tomato yield potential across 5 trials. Minuet™ Biological Fungicide showed a great response, especially with 2 applications.**



2 Minuet™ Biological Fungicide Applications  
Field trials in Georgia, Florida and California, in 2018.

## Supports An Increase In Lettuce Leaf Surface Area



Untreated Control

Minuet™ Biological Fungicide 16 oz/A

Greenhouse trials done at Bayer R&D facility in West Sacramento, CA, in 2019.  
Variety: Iceberg



*\*Farmers living in Alaska, California or Hawaii do not qualify for Bayer PLUS Rewards*

**IMPORTANT:** This bulletin is not intended to provide adequate information for use of these products. Read the label before using these products. Observe all label directions and precautions while using these products.

**MINUET™**

For more information, visit [www.CropScience.Bayer.us](http://www.CropScience.Bayer.us).

ALWAYS READ AND FOLLOW PESTICIDE LABEL DIRECTIONS. Bayer, Bayer Cross and Minuet™ are registered trademarks of Bayer Group. For additional product information call toll-free 1-866-99-BAYER (1-866-992-2937) or visit our website at [www.BayerCropScience.us](http://www.BayerCropScience.us). Bayer CropScience LP, 800 North Lindbergh Boulevard, St. Louis, MO 63167. ©2023 Bayer Group. All rights reserved.

